

International Quilt Study Center & Museum

2008-2009 Annual Report

From the Director

The International Quilt Study Center & Museum celebrated its first full year of operation and what a year it has been! Nearly 24,000 visitors from every state and from 31 countries outside the U.S. were welcomed to our new home.

Through its exploration of the artistic and cultural significance of the world's quilts and quilting traditions, the IQSC strives to foster greater cultural understanding—so important in today's global society.

Inside this report you will learn about:

- Our unique and thriving Quilt Studies graduate program
- The symposium, "The Global Quilt: Cultural Contexts"
- An exciting year of quilt exhibitions
- Acquisitions of more than 1000 quilts
- The best volunteer force in any museum
- Engaging public programs and visitor experiences
- Membership programs, donors and grant support
- Honors and awards

We look forward to sharing another year of growth,

Patricia Crews

Willa Cather Professor of Textiles



CONTENTS

Collections.....	2
Exhibitions.....	4
Education and Public Programs	5
Quilt Studies.....	6
Visitor Services	8
Communications/ Web.....	9
Membership	10
Support	12
Advisors.....	15



COLLECTIONS & ACQUISITIONS

The IQSC collection is the heart of the institution. Its focused development represents the cumulative efforts of a dedicated acquisitions committee, coupled with the sustained commitment of our benefactors and the many individuals who have donated cherished family quilts and collections to the IQSC.

Approximately 1000 new quilts were acquired in 2008-2009; the collection now totals more than 3000 quilts. All acquisitions are reviewed and approved by the Acquisitions Committee, chaired by Curator of Collections Carolyn Ducey and including Xenia Cord, Patricia Crews, Michael James and Robert James. The committee is guided by the IQSC Collections Plan, which is updated annually.

2008-2009 Acquisition highlights:

- The **Byron and Sara Rhodes Dillow Collection** includes approximately 275 quilts and 150 chintz and cotton fragments. It added depth to the Center's pre-1850s collection with numerous chintz wholecloth, album, and red and green appliqué quilts.
- The **Mary Campbell Ghormley Doll Quilt Collection** contains more than 300 small quilts and 50 doll beds. Made by mothers and daughters, it is a one-of-a-kind group that charms audiences.

Approximately 1000 new quilts were acquired in 2008-2009; the collection now totals more than 3000 quilts.

COLLECTIONS CARE

COLLECTIONS MANAGER JANET PRICE AND A LOYAL VOLUNTEER STAFF STEADILY COMPLETE CARE AND CONSERVATION TASKS, AS SHOWN BY THESE STATISTICS FOR 2008-2009:

- 645 quilts photographed
- Quilt object surveys and data entry completed for 645 quilts
- 1588 archival boxes assembled, numbered and organized in storage shelving
- 203 quilts processed before museum exhibition
- 199 quilts surveyed, vacuumed and returned to storage after museum exhibition
- 85 quilts prepared and shipped for traveling exhibitions
- 32 quilts surveyed, vacuumed and returned to storage after traveling exhibitions
- 69 Education quilts processed for display within the museum and at other venues
- 242 quilts made available for study by 10 visiting scholars

Studio quilts:

The **Ludy Strauss Collection** is a group of quilts made in the 1970s by contemporary artists of the West coast scene. Ludy Strauss encouraged the various artists to design quilts, which were then made by a group of Canadian quiltmakers. The collaborative effort is fully documented with letters, original drawings, maquettes and catalogs that Ms. Strauss carefully maintained.

Significant studio quilts were acquired from international artists, including

- Pauline Burbidge of Scotland
- Theresina Gai of Italy
- Anne Woringer of France

Works by several American quiltmakers were also added, including

- Michael James
- Katie Pasquini Masopust (a retrospective group of 23 quilts made between 1980 and 1995)
- Ruth McDowell
- Esther Parkhurst
- Susan Shie
- Barbara Watler



From the Dillow Collection, 2008.040.0050, Hexagon Squares, possibly UK or US, c. 1800-1820

International traditional quilts:

- Indian and Pakistani *rallis* representing four new groups or areas: the Wadera, landowners of Sindh; the Rahim Yar Khan region in Punjab; the Cholistan desert region in the southern Punjab; and the Badin district of Sindh
- Indian kanthas including a woven Baruch *Sujani*
- two seventeenth century corded silk quilts
- an English linen coverlet with false quilting and silk embroidery
- a rare Japanese quilted fireman's jacket
- two mid-nineteenth century whitework pieces

Nebraska quilts by

- Carol Falk of Nebraska City
- Louise Howey of Lincoln

Education Collection

The IQSC Education collection has also grown in number and usage. Quilts in the Center's Education Collection may be displayed outside the museum for a variety of reasons: some may lack provenance; some styles or patterns are duplicated in the Permanent Collection; and occasionally, donors specifically ask that their quilts be part of the Education Collection. Whatever the reasons, the quilts in the Education Collection serve as excellent examples of particular quilt styles, time periods, or artistic efforts. They are available to institutions that cannot meet the strict environmental and security conditions required for the Permanent Collection.

2008-2009 Quilt Donors

Hortense Beck
 Kathryn Berenson
 Ellen Burd
 Comhusker Regional Chapter of the Red Cross
 Kathryn Christopherson
 Byron and Sara Rhodes Dillow family
 Carol and Laurence Falk
 Virginia Fast
 Roger and Mary Campbell Ghormley
 Jackie Greenfield
 Lenn Jackson
 Judith Kampmann
 Sarah Beck Kirby
 Jill Lasersohn
 Kenneth and Gayle LeGrand
 Robert Masopust
 Lindsey Miller-Lerman
 Kathleen Murphy
 Nebraska Quilt Project Committee members
 Quilts of Valor organization
 Audrey Newton
 Janet Newton
 Meredith O'Malley
 Julie Patterson
 Sr. Frances Pytlík
 Margaret Rickers
 Katsuhiko Sakiyama
 Sheldon Stone
 Judy Wendorff

Traveling Exhibitions

The Quilt Museum & Gallery in
York, England
"Quilts in Common"
10/10/08–1/11/09

The American Folk Art Museum in
New York City
"Recycling and Resourcefulness:
Quilts of the 1930s"
10/21/08–3/15/08

The Women's Museum in Dallas
"Partisan Pieces: Quilts of Political
and Patriotic Persuasion"
11/6/08–4/17/09

University of Wisconsin-Madison
"Crazy Quilts"
1/21/09–3/8/09

The Textile Museum in Washington,
D.C.
"Constructed Color: Amish Quilts
from the International Quilt Study
Center Collections"
4/6/09–9/6/09

Upcoming Exhibitions

"A Fairyland of Fabrics: The
Victorian Crazy Quilt"
7/24/09–10/25/09

"Four Part Harmony: The Linda
Carlson Four-Block Quilt
Collection"
10/30/09–3/28/10

"Perspectives: Art, Craft, Design,
and the Studio Quilt"
11/21/09–5/9/10

"Quilts Under the Microscope"
4/2/10–9/5/10

"South Asian Seams: Quilts from
India, Pakistan, and Bangladesh"
5/15/10–11/7/10

EXHIBITIONS

The IQSC featured ten changing exhibitions during the past year. These exhibitions allowed audiences of all ages and backgrounds to explore the diversity of people around the world and the ways in which all cultures are connected. The inaugural exhibition "Quilts in Common", which remained on view until August 2008, powerfully emphasized the connections and commonalities that quilting traditions have to each other and to other forms of visual art across time and place.

Other 2008-2009 exhibitions included:

- "*Pojagi*: Patchwork and Quilts from Korea" featured over 100 *pojagi* (Korean patchwork wrapping cloths) from the Chojun Textile Art and Quilt Museum of Seoul, South Korea. This exhibition introduced a beautiful art form to many visitors, highlighting the similarities and distinctions between a Korean craft and American quilting. (Curated by Soon Hee Kim, Marin Hanson, Jonathan Gregory, and Ree Chyu.)
- "Chintz Applique: From Imitation to Icon," showcased 21 exceptional (and exceptionally large) examples of this early tradition and featured several quilts from the Byron and Sara Rhodes Dillow collection. A monograph that included all IQSC chintz applique examples complemented the exhibition and featured an insightful essay on the history of chintz fabrics and chintz applique techniques. (Curated by Carolyn Ducey.)
- "American Quilts in the Modern Age, 1870-1940" featured quilts made between the Civil War and World War II, and included quilts in styles ranging from pieced block to Crazy style to Colonial Revival examples to one-of-a-kind creations, the full array of late-nineteenth and early-twentieth century quilt design. (Curated by Marin Hanson, Patricia Crews, and Jonathan Gregory.)
- "Crafting a Better Planet" displayed winning quilts from the Mountain Mist-sponsored competition.
- "Inspired by Red and Green" showcased selections from the American Quilt Study Group's red and green applique quilt study.
- "Quilt Japan" featured selected quilts from the 9th Quilt Nihon Exhibition.

Three well-researched exhibitions curated by graduate students as their culminating graduate projects included:

- "Visual Systems: the Quilter's Eye" (Peggy Derrick)
- "Yikes! Stripes" (Elizabeth Andrews)
- "Grace Snyder: A Life in Extraordinary Stitches" (Janet Price)



EDUCATION AND PUBLIC PROGRAMS

The International Quilt Study Center & Museum fosters the discovery of quilts and quilting traditions by offering programs that are of consistent high quality, relevant to our collections and to our audiences, and innovative in both concept and execution.

In 2008-2009 a wide variety of programs were provided for the museum's specific audiences (quilt enthusiasts, the general public, K-12 school students, tour groups).

Public Programs

Quilt Identification Days: 4 events held, 96 quilts identified and documented by curatorial staff and trained volunteers.

Lecture Series: Public lectures featuring

- Janet Berlo, Professor of Art History, University of Rochester
- Patricia Crews, Willa Cather Professor of Textiles, UNL
- Rosemary Crill, Sr. Curator South Asian Dept., Victoria and Albert Museum
- Jonathan Gregory, UNL Doctoral Student
- Marin Hanson, IQSC Curator of Exhibitions
- David Hornung, Associate Professor of Art, Adelphi University
- Bridget Long, IQSC Fellowship Recipient
- Janneken Smucker, Author and doctoral candidate, University of Delaware

Tuesday Talks: Monthly talks led by curators, special guests, and IQSC staff offered museum visitors the opportunity to engage with quilts more deeply during their visit. Twelve talks were held with an average attendance of 10 people.

Public Guided Tours : Available free with admission on Wednesdays (11 am) and Saturdays (11 am and 1 pm). 160 tours led by trained volunteer docents.

Pre-Arranged Guided Tours: 206 tours, 4,429 participants

Workshops & Classes: 6 workshops, 291 participants

Discovery Cart: Hands-on materials related to exhibitions

Resources provided to K-12 Programs

- Visual Systems curriculum
- Grace Snyder online exhibition and curriculum

University Collaborations

- Arts are Basic—aesthetic education program managed by the College of Fine & Performing Arts (259 student participants)
- Art in the Community—UNL students in Sandra Williams' course worked with middle school students to create quilt blocks that represented something personal about themselves.



Long-time IQSC volunteer Jean Davie was the first to be featured in the Volunteer Spotlight, a new feature on the website, www.quiltstudy.org, to recognize volunteer contributions.

VOLUNTEERS

IQSC volunteers proved to be among the most dedicated and hard-working of any institution. More than 140 volunteers work in Collections, in the Reading Room, as docents, and as Gallery Assistants. They provided more than 4,400 volunteer hours in FY 2008-2009.

Graduates

July 2008 - June 2009

August 2008

Alice Kinsler, MA
LynDee Lombardo, MA

December 2008

Valerie Davis, MA
Peggy Derrick, MA
Mary Fitzgerald, MA

May 2009

Elizabeth Andrews, MA
Janet Price, MA

TEXTILE HISTORY / QUILT STUDIES

The highest priority of the Center is to support the academic mission of the University, in the areas of research, outreach and teaching. The collections are an extraordinary resource for advancing our understanding of the past. They offer opportunities to graduate students for research using culturally significant textile documents that can be found no where else.

Twenty-seven students have completed the Textile History/Quilt Studies program since the formation of the IQSC in 1997. Of those, eleven completed the distance delivery program in quilt studies; the remainder completed their masters degree via the traditional program offered on campus. Students in the unique masters program are prepared for careers or career advancement in universities, museums, historical societies, and historic sites in the areas of collections care and management, education and research. They become part of a world-wide network of museum professionals and textile scholars, devoted to the furtherance of quilt scholarship.

Currently twenty textile history/quilt students are admitted to the graduate program. Twelve students are in various stages of completing the distance delivery masters program; eight students are in the residential program in textile history/quilt studies.

Twenty-seven students have completed the Textile History/Quilt Studies program since the formation of the IQSC in 1997.

Summer Seminars 2008-2009

"History of Quilts"

June 9 to August 14, 2008

Dr. Virginia Gunn, Professor,
University of Akron

"Textile and Costume Conservation."

July 13-17, 2009

Martha Grimm, Executive Director of
Textile & Costume Conservation
Services, Inc., Phoenix, Arizona;
textile/costume conservator with the
Missouri Historical Society, Phoenix
Art Museum, and Heard Museum



SYMPOSIUM

The International Quilt Study Center's fourth biennial symposium, "The Global Quilt: Cultural Contexts" held April 2-4, 2009, was truly international in scope. It was exactly the sort of activity envisioned when the IQSC was formed – a conference that brings together a diverse group of individuals for dialogue and discovery.

- 180 registrants attended from at least 25 states and nine countries outside the United States
- Participants included artists, historians, educators, collectors, curators, quilters, students and enthusiasts

Symposium keynote speakers were:

- Dr. Jennifer Harris, Deputy Director/Curator of Textiles at the Whitworth Art Gallery, University of Manchester, UK
- Dr. Jacqueline Atkins, Curator of Textiles for the Allentown Art Museum in Allentown, Pennsylvania



Fifteen concurrent sessions featuring 37 papers and panel discussions covered:

- how the quiltmaker's art is expressed and transmitted among and across cultures,
- ways in which quilts communicate cultural values and reflect cross-cultural transmission of style or technique, and
- how quilts reflect and express environmental, artistic, scientific and technological influences of the society in which they were made.

Moderators included UNL faculty and curatorial staff as well as a number of Associate Fellows of the International Quilt Study Center. The co-chairs of the symposium were Mary Ellen Ducey, UNL Archivist and Angela Konin, IQSC Education Coordinator.

RESEARCH

IQSC research is disseminated through the biennial symposium as well as numerous publications and presentations.

Publications 2008-2009

Marin Hanson. "Modern, Yet Anti-Modern: Two Sides of Late-Nineteenth and early-Twentieth-Century Quiltmaking." Ed. Laurel Horton, 105-136. *Uncoverings* 2008. Lincoln, NE: America Quilt Study Group, 2008.

Jonathan Gregory and Marin Hanson. *Pojagi: Patchwork and Quilts from Korea*. Lincoln, NE: International Quilt Study Center & Museum, 2008.

Carolyn Ducey. *Chintz Applique: From Imitation to Icon*. Lincoln, NE: International Quilt Study Center & Museum, 2008.

Carolyn Ducey. "Chintz – An Intercultural Art." *AATCC Review*. March, 2009, pp. 27-29.

Marin Hanson and Patricia Crews (Eds.) *American Quilts in the Modern Age, 1870-1940*. Lincoln, NE: University of Nebraska Press, 2009.

Presentations 2008-2009

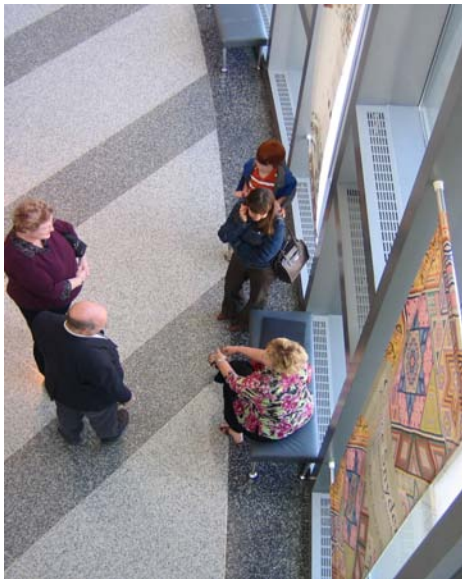
Jonathan Gregory. "Meanings and Messages: Quilts to Comfort the Families of America's Fallen in the Afghanistan and Iraq Wars." Textile Society of America Biennial Symposium. Honolulu, Hawaii, September 25-27, 2008.

Marin Hanson. "Modern, Yet Anti-Modern: Two Sides of Late-Nineteenth and early-Twentieth-Century Quiltmaking." American Quilt Study Group Annual Seminar, Columbus, OH, October 3-5, 2008.

Patricia Crews. "Material Culture: Window to the World." Invited inaugural lecture. Avenir Museum of Design and Merchandising. Colorado State University. April 22, 2009.

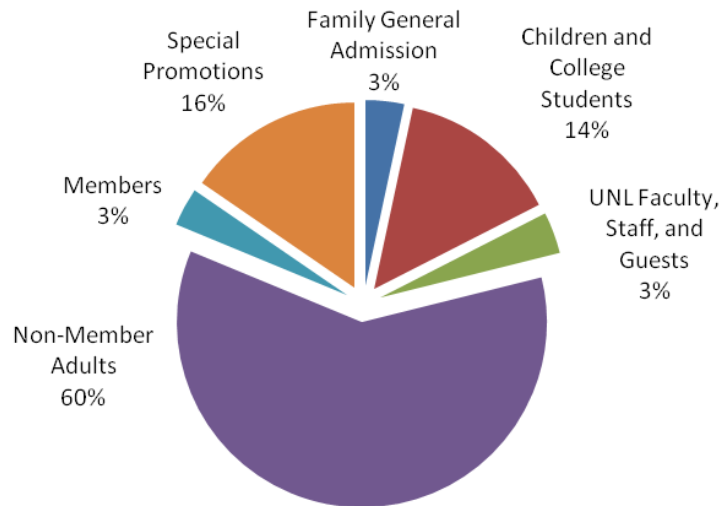
Michael James. "Reinventing Quilts in a Digital Age." Invited lecture. Textile Museum. Washington, DC. May 7, 2009.

Marin Hanson. "'Exotic' Asia in 'Traditional' American Quilts of the Early Twentieth Century." Seventh International Conference on New Directions in the Humanities. Beijing, China, June 2-5, 2009.



VISITOR SERVICES

The International Quilt Study Center & Museum welcomed nearly 24,000 guests between July 1, 2008 and June 30, 2009. Visitors came from all 50 states, the District of Columbia, and thirty-one other countries. While adults were in the majority, more than 3,000 young people visited last year.



Visitation by Category: July 2008-June 2009

GRANTS

James Foundation. \$226,993.
"Quilting Across the Globe."
11/2006–12/2011

Woods Charitable Fund. \$93,600.
"Education and Outreach
Coordinator." 07/2007–08/2009

Lincoln Arts Council, \$1,000. "Nancy
Crow Lecture and Exhibition."
3/2008–8/2008

Nebraska Humanities Council.
\$4950. "Quilts in Common Lecture
Series." 9/2007–10/2008

National Quilting Association. \$500.
"Grace Snyder: Educational Program
Development." 1/2008–12/2008

National Quilting Association. 3460.
"Grace Snyder: A Life in Extraordinary
Stitches." 1/2009–6/2009

James Foundation. "Chintz Applique
Quilts." \$75,000. 4/2007–9/2009

Woods Charitable Fund. \$50,000.
"Communication Coordinator
Support." 6/2009–07/2011

Lincoln Arts Council, \$500.
"Organizational Capacity Training
Grant." 5/2009–8/2009

*Institute for Museums and Library
Services (IMLS),* \$800. "Connections
to Collections Bookshelf" Core set of
conservation reference books.
6/2009

Several additions to visitor services were implemented in the past year:

An expanded Visitor Guide provides timely information about current and upcoming exhibitions and events, along with a building map and information about the building, sculpture, and the Center.

A third floor Education Gallery gives visitors the opportunity to view approximately a dozen quilts that are typically drawn from the Center's education collection.

Doll quilts and furniture may be viewed at all times in the Ghormley Reading Room.

Exhibition panels provide visitors with the opportunity to more fully understand the breadth of the Center's mission and activities.

Illustrated maps in the lobby allow visitors to orient themselves and plan their time in the building.

When available, audio tours of major exhibitions are a FREE benefit with admission.

Videos on the first floor provide information about collection care, the graduate program, and other "behind the scenes" work at the museum.

COMMUNICATIONS

Communications resources are allocated to each area of the IQSC mission. During the first full year of museum operations a strategic advertising and promotion plan was made possible by grant funding. Efforts included:

- National cooperative advertising programs targeting the general public and travelers
- Ads in quilt and textile industry publications targeting the quilt enthusiast
- Local and regional print and broadcast advertising aimed at establishing awareness of the new museum and stimulating first-time visits
- Extensive distribution of promotional materials in key travel markets

Public relations activities build awareness of each new exhibition and also spotlight significant donations, special events, awards and other IQSC news. Well over 120 placements of “free” media coverage have been tracked in the last fiscal year in local, national, and international media channels. Relationships developed with major publications, free-lance writers, and industry leaders are essential to successful placement of feature stories, photographs, interviews and other coverage. Regular stories featuring IQSC quilts and information are now included in *Fons & Porter’s Love of Quilting*, *American Patchwork & Quilting*, *Australian Patchwork & Quilting* and the magazine of the Japan Handicraft Instructors Association. Regular maintenance of numerous local, national and international media calendars of events is also useful in creating excitement about the center and its exhibitions and programs.



Regular stories featuring IQSC quilts and information are now included in American Patchwork & Quilting, Australian Patchwork & Quilting, Fons & Porter’s Love of Quilting, and the magazine of the Japan Handicraft Instructors Association.

WWW.QUILTSTUDY.ORG

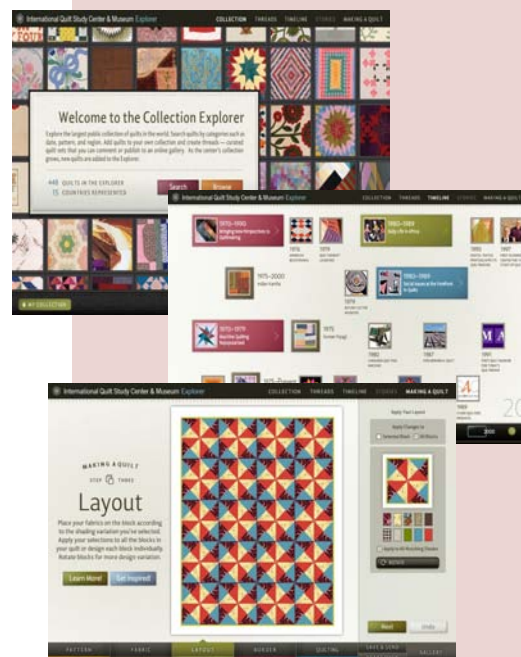
The website continues to serve as the first point of contact for thousands of IQSC fans around the world.

The enormously popular Quilt of the Month list has grown to include 7000 subscribers.

Traffic to the web has grown to an average of nearly 10,000 unique visitors per month, a 15% increase in the last year.

Additions and improvements to the site include:

- integration of Quilt Explorer into www.quiltstudy.org in July 2008,
- addition of six new podcasts, and
- development of new on-line exhibitions.



MEMBERSHIP

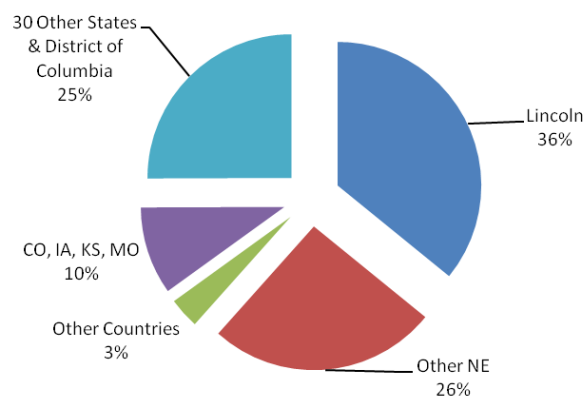
The International Quilt Study Center & Museum's 435 members come from 35 states, the District of Columbia, and six countries outside the U.S. Membership increased by more than 50% last year, growing in four categories.

Category/Rate	On July 1, 2008	On May 31, 2009
Individual - \$40	164	303
Family - \$60	70	58
Contributing - \$100-\$249	29	51
Sustaining - \$250+	13	22
Student - \$15	1	4
TOTAL	277	435

Individual and Student members receive a full year of unlimited free admission to the museum and invitations to special events, including Sneak Previews of major exhibitions. They also receive discounts on selected classes, workshops, and events, as well as a complimentary quarterly e-newsletter. In addition to all of the benefits of Individual membership, the Family category allows a member to bring a spouse or guest, as well as children and grandchildren under age 18.

In addition to the benefits of Family Membership, Contributing members receive guest passes for two free admissions as well as exhibition gallery guides. Sustaining members receive four guest passes, gallery guides, a complimentary certificate for Quilt Identification day, and a complimentary copy of selected exhibition catalogs. Contributing and Sustaining members are also recognized in the Museum's Annual Report.

Membership by Location



Sustaining Members [\$250 and above]

Hazel Anthony
Cynthia and Kenneth Erdman
Marianne Fons
Carol Gendler
Pat and Mike Heaton
Carolyn Hoefer
Frances Holliday-Alford
Julie & Michael Jacobson
Judith and Michael James
Ralph James
Carol Kusek
Joan Laughlin
Ted McMinn
Gayle Murphy
Shirley and Daniel Neary
Audrey Newton
Catherine Paglia
Ruthanna Russell
Diann Sorensen
Betty and Duncan Starr
Marsha Stork
John M. Walsh, III



***The International Quilt Study Center & Museum's 435 members
come from 35 states, the District of Columbia, and six countries
outside the U.S.***

Contributing Members [\$100-\$249]

Margrethe and Bill Ahlschwede
Sharon Allder
JoAnne and Gordon Bair
Rosalie Barabas
Lynne Bassett
Norma Bliss
Eileen & Paul Boslaugh
Marge and Jim Bresel
Evelyn Catt
Katy Christopherson
Lynne Coleman
Diane Deahl
Judith L. Dietrich
Carroll and Donald Dischner
Michele M. Eakins
Janet and Carl Eskridge
Marian Fosler
Kay and Sam Grimminger
Brenda L. Groelz
Mary Anne Guggenmos

Esther and DeLynn Hay
Michelle Heng
Nancy Hornback
Ellan and Andrew Hove
Cynthia Johnson
Janice Kenner
Carmen Kleager
Mary and John Krecek
Judy Bucklin and Leslie C. Lane
JoAnn Leung
Marilyn Lockard
Anita Loscalzo
Sandy Luebbers
Kimberlee Madsen
Amrita and Sabyasachi Mahapatra
Elaine Martin
Carolyn Mazloomi
Peggy Ghormley McAllaster
Penny McMorris
George W. Neubert

Joy Osborn
Virginia and John Owens
Marian Peterson
Deborah S. Rake
Ruth Rauscher
Jay A. Rich
Jane and Ky Rohman
Kathleen Rutledge and Ted Kooser
Susan Salser
Karyl Smith
Gladys E. Sorenson
Rebecca Stevens
Elizabeth Sterns
Deanna and Theodore Suhr
Odette Goodman Teel
Dianne Thomas
Harry Tompkin
Kris Townsend
Shelly Zegart

Building Campaign Donors

Includes individuals, corporations and foundations who have given \$1000 or more to the capital campaign.

Individuals

Alice Ahlschwede
Margrethe P. and William T. Ahlschwede
Harold and Marian Andersen
Beth Stringer Anderson
In Honor of Sandra Anderson
Hazel M. Anthony, Ed.D.
Marlene P. Armbrecht
Anna Stutz Bailey
Carolyn and John Bailey
In Honor of Anna Stutz Bailey
Gordon L. Bair
Jo Anne Wiegers Bair
Barbara A. Baker
Peggy Baldwin-Clayton
Chuck and Joan Battey
David and Joanna Baxter
Mildred Moyer Baynard
Mary Ann and Bill Beavers and family
Kathryn Berenson
In Memory of Arlina Adams Biggs
In Honor of Dorothy McClean Boettner
Elizabeth Meyer Boslaugh
Marguerite A. Boslaugh and David B. Guadiana
Max, Rachael and Andrea Boslaugh
Paul R. and Eileen J. Boslaugh
Sara E. Boslaugh and Daniel J. Peck
Elizabeth W. Brownlee
Charlotte Rieke Bruce
Jack and Sally Holmes Campbell
Kathy and Dan Campbell
Donna Sheilds Carlberg
Barbara Ann Caron
In Honor of F.W. and Anne Pickett Carstens
In Honor of Mame Chambers
Ricky Clark
Pete and Linda Claussen
In Memory of Kay Clinch
Betty and George Cobel
Pat Caudill Cole
Jay Conrad
Xenia E. Cord
In Memory of Adele Coryell and Donald Hall
In Memory of Peg Coryell, NU'23
Carol Russell Cranston
David and Patricia Crews
Mary Bywater Cross
Dr. Tim and Ann Dillow Crowley
Beverly A. Cunningham
Linda and David Daiker
Jean Carnahan Davie
Diane E. Deahl
Mark and Marilyn (Pollock) Debban
DeBord Family
Bentley Denver
In Honor of Natalie Elizabeth Dibbern
Dave and Gwen Dillow
Family and Friends of Sara and Byron M. Dillow M.D.
In Honor of Sara Rhodes Dillow
Jeff and Beth Dillow
Caroll and Donald Dischner
Janee and Larry Dlugosh

Donald and Darlene Haselhorst Ducey Family
Betty W. Duncan
Kathryn Dawn Duncan, Ian and Eric
The Robert Duncan Family
E.S. Bud and Carol Dunklau
Suzanne Earnest
In Memory of Alyce Hilkemeier Ellingson
Janet and Carl Eskridge
Jerry and Judy Everly
Terry Fairfield
Carol Falk
Patricia and Roland Finley
Marianne Fons
Mrs. Don Forke
Robin Forke
In honor of Mary Gaspirik
Ordella Geisler D.V.M.
Merikay Gengenbach
Helen James Fell George
Roger and Mary Campbell Ghormley
Barbara Zemer Golan
Barry Gottsch and Wolfgang Gottsch
Bret and Stacey Gottsch
Robert and Cindy Gottsch
William and Carrie Gottsch
In memory of Eleanor and Herman Grasz
Sheila and Ken Green
In Memory of Mrs. Taylor (Martha) Aitken Greer
In Honor of Pamela Wilson Gunlicks
In Memory of Edith Malone Gunlicks
Dr. Virginia Gunn
James H. and Delores A. Gunnerson
In Honor of Carrie Hackley
Pat and Chip Hackley
Rachael Lock Hamilton
In Memory of Jean Cullinan Harnsberger
Tom and Jane Heany
Kenneth and Christina Hecht
Dr. Keith M. Heim
Paul H. and Betty Roeder Henson
Mike, Sally (Spanhake), Mary and Charles Hillis
Mary and Cliff Hillegass
Dr. Robert Hillestad
In Loving Memory of Marilyn Seward Hitz
In Honor of Magdalena Hock
Bill and Sue Holmes Hodder
Carolyn A. Hoefer
In Honor of Anna Lea Hoerner
Cassia Holstein
Jared Holstein
Jonathan Holstein
Hal and Judy Hoppe
Ruth Andrews Hopping
In Honor of Virginia Hughes
Eleanor Reimers Irwin
Ardis and Robert James
Janice and Ralph James
Michael and Judith James
In Honor of Peter and Doris Hjelm Jensen
Gordon and Natalie Burn Johnson
Lynn L. Jones Family
Rita C. and Joseph E. Kean
Janice R. Kenner
Soon Hee Kim
Krissie Watts Kingsley
Lou and Carmen Kleager
Fay and Delmar Kliever
Eva and Robert Knight
In Memory of Whitney Mae Kosch
Marjorie and David Kostelnik

Carol and Dr. Anthony Kusek
Sarah Meyer Lahr
Cheryl and Nick Lamme
Judith Bucklin Lane and Leslie C. Lane
Pauline R. Langsley
Joan Laughlin, Ph.D.
Ken and Gayle LeGrand
Tom and Janice Lippincott
LynDee and Terry Lombardo
Bridget and Peter Long
Jeff and Kay MacDonald
In Memory of Linda Mager
In Memory of Bertha South Maloney
Elaine K. and James C. Martin
Ruth and Martin Massengale
In Memory of Ellen Gillihan Maxwell
In Honor of Doris McAllaster
In Memory of Nettie Maxwell McClean
In Honor of Nina McColloch & Geraldine Bricker
Dr. Campbell and Marilyn McConnell
Ursula Eland McCracken
Sandi McMillam
In Memory of Ardis Meeves
Sharon and Bob Meisenheimer
Janet Meyer
Louis M. Meyer
Bonnie and Jack Miller
Janet L. Miller
Nita van der Hoof Miller
Mieko Miyama
Jo and Russ Morton
Phyllis and Rod Moss
In Memory of Marcelene Gobel Muenster
In Honor of Kathleen Boettner Murphy
Mabel E. Musgrave
Shirley and Daniel Neary
Gwendolyn A. Newkirk, Ed. D.
In Memory of Mary Adams Obrist
Doris O'Donnell
Roxann and Richard O'Hare/Cosmic Cow
Diane Oldfather
Wanda and Irv Omtvedt
In memory of Beulah Mark Ose
Louis and Cathy James Paglia
In Honor of Ann Smiley Paulson
In Memory of Leona Brant Paulson
Lucille Jack Payne
Mary and Roy Pearson
Paulette and Terry Peters
Miriam and Charles Peterson
Jane Brackett Phelps
Burdette and Ted Randolph
In Honor of Ruth and Gene Rauscher
In Honor of Dora O. Reagan
Carl and Jane Rohman
Luana and Paul Rubin/eQuiter
Stella Rubin
In Honor of Dale and Marie Bailey Rustermier
Sheri and David Ruwe
Susan Salser
Lola and Edward Schall
Raymond Schmidt
Joan L. and William E. Schwalm
Ann R. Seacrest
Beatrice "Mike" Seacrest
Devon Seacrest
James C. and Rhonda Seacrest
Nancy and Dale Sells
Tadanobu Seto
Gertrude Clarke Skade

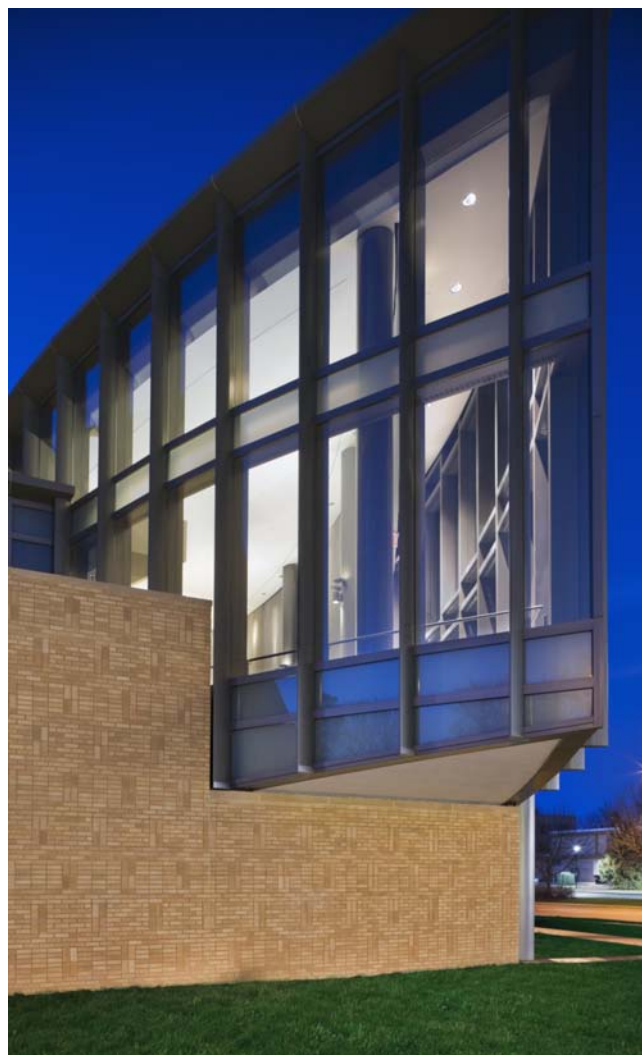
In Honor of Annabelle King du Vassal Snow
 In Honor of Mary Elizabeth Dibbern Snow
 Dr. Mark B. and Diann S. Sorensen
 Meyer and Jean Steinberg Family Foundation
 In Honor of Carrie Stelzer
 Betsy and Wally Stern
 Bill and Phyllis Stewart
 E. Frances Strain
 In memory of Connie R. Strobe
 Janet L. Sullivan
 Leigh, Stephanie and Elizabeth Sutton
 Donna M. Svoboda
 Robert M. and Vicki (Hoesch) Swanson
 Clara Ann Peterson Tennis
 The Brian and Dianne Duncan Thomas Family
 Rose Marie Tondl, Ed.D.
 Marion E. and Barbara B. Tritsch
 John D. Turner and Elizabeth A. Sterns
 Carol and Larry Uebner
 In Honor of Gail van der Hoof
 Jill van der Hoof
 In Memory of Marie Van Sickle
 Edward and Diane Vigna
 In Honor of Sophia Bierl Vinduska
 Jeffrey Walker/Sharon Wertzel
 Dr. Lynn Valdivia Wallace
 John M. Walsh III
 Dr. Tom and Carol Waring
 Janice Tauer Wass
 Eileen Powell Weidman
 Jody and Bob Weigel
 Virginia Welty
 In Memory of Fredricka Matthiesen Wilson
 Lois E. and Douglas J. Wilson
 Linda (Esslinger) Winter
 In Memory of Carmita Bush Woerner
 Joyce Ellen Worley
 Marion Ekstrom Wright
 Erceil and Pat Kerkman Young
 In Memory of Darlene Young
 Shelly Zegart

Groups and Organizations

AHSGR-Lincoln Chapter Quilters
 American Quilt Study Group
 Applebee Quilters
 Blue Cross and Blue Shield of Nebraska
 Blue Valley Quilt Guild
 Braided River Quilters
 Calico Quilt Club
 Cottonwood Quilters of Nebraska
 Country Piecemakers Quilt Guild
 European Art Quilt Foundation
 Fat Quarters Evening Quilt Guild
 Fremont Friends
 Friends of the Robert Hillestad Textiles Gallery
 Heartland Quilter's Guild
 Heritage Needlework Guild
 International Quilt Festival-Houston
 Japan Handicraft Instructors Association
 Lincoln Quilters Guild
 Midwest Feedsack Club
 Nebraska State Quilt Guild
 Omaha Quilters Guild
 Panhandle Quilt Guild
 Plum Creek Quilters Guild
 Plumbing, Heating and Cooling Contractors Auxiliary of NE
 Prairie Quilt Guild
 Quilt Study Group of Australia
 Quilters Guild of Dallas
 Quilters Guild of Plano
 The Quilters' Guild of the British Isles
 Union Bank and Trust Company
 York Area Quilt Guild

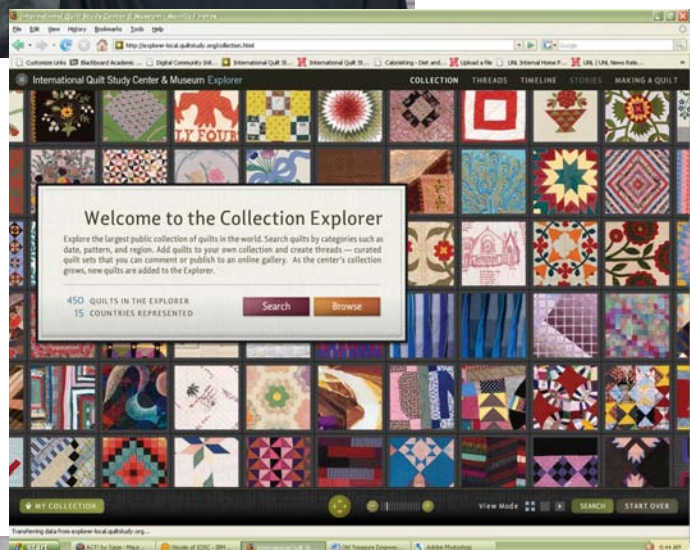
Donors of \$100 or more to Unrestricted Funds, Memorial Funds and Endowment Funds

Prairie Piecemakers Needlework Guild
 Hammersmith Quilters Guild
 Amador Valley Quilters, Inc.
 Alice Ahlschwede
 Lee Basham
 Tom Basham
 Kathryn Christopherson
 David and Patricia Crews
 David and Linda Daiker
 New York Empire Quilt Guild
 John Fulwider
 Allen Hoffman
 Kenneth and Gayle LeGrand
 Gwendolyn Newkirk
 Alison Schwabe
 Margaret Stent
 Nancy Summerville
 Mr. and Mrs. James Swartz





Official presentation of Silver Level LEED (Leadership in Energy and Environmental Design) certification from the US Green Building Council.



The NEBRASKALand Foundation named the International Quilt Study Center & Museum its Rising Star Award winner, recognizing the new museum as a significant contributor to the state's tourism effort.

HONORS

International Quilt Study Center & Museum in collaboration with Second Story Interactive Studios: Bronze Award, Online Presence category of the 2009 American Association of Museums' MUSE Awards for "Quilt Explorer"

International Quilt Study Center & Museum's Quilt Explorer: Nominated for the 13th Annual Webby Awards in the Cultural Institutions category, regarded as the most prestigious web award offered

Michael James: 2009 Outstanding Research and Creative Activity (ORCA) Award conferred by the University of Nebraska system.

Patricia Crews: 2009 College of Education and Human Sciences Faculty Student Mentoring Award

Jonathan Gregory: 2009 College of Education and Human Sciences Outstanding Graduate Student Award

Carolyn Ducey: Meredith Scholar Award, sponsored by the American Quilt Study Group; 2009 Lincoln Quilters Guild Scholarship; 2009 Geeta Khandelwal International Quilt Study Center Research Award

Madeleine Roberg: UNL Chancellor's Fellowship for recruitment of outstanding graduate students

Jonathan Gregory: awarded the 2009 Barbara L. Kuhlman Scholarship for students of fiber arts by the Barbara L. Kuhlman Foundation, Greene, New York

International Advisory Board

Xenia Cord
Marianne Fons
Brenda Groelz
Bettina Havig
Ralph James
Robert & Ardis James
Soon-Hee Kim
Gül Laporte
George W. Neubert
Sue Prichard
Nobuaki and Mariko Seto
Herbert and Patricia Stoddard
John M. (Jack) Walsh III
Alice Zrebic

Ex-Officio Board Members

Patricia Crews
Michael James

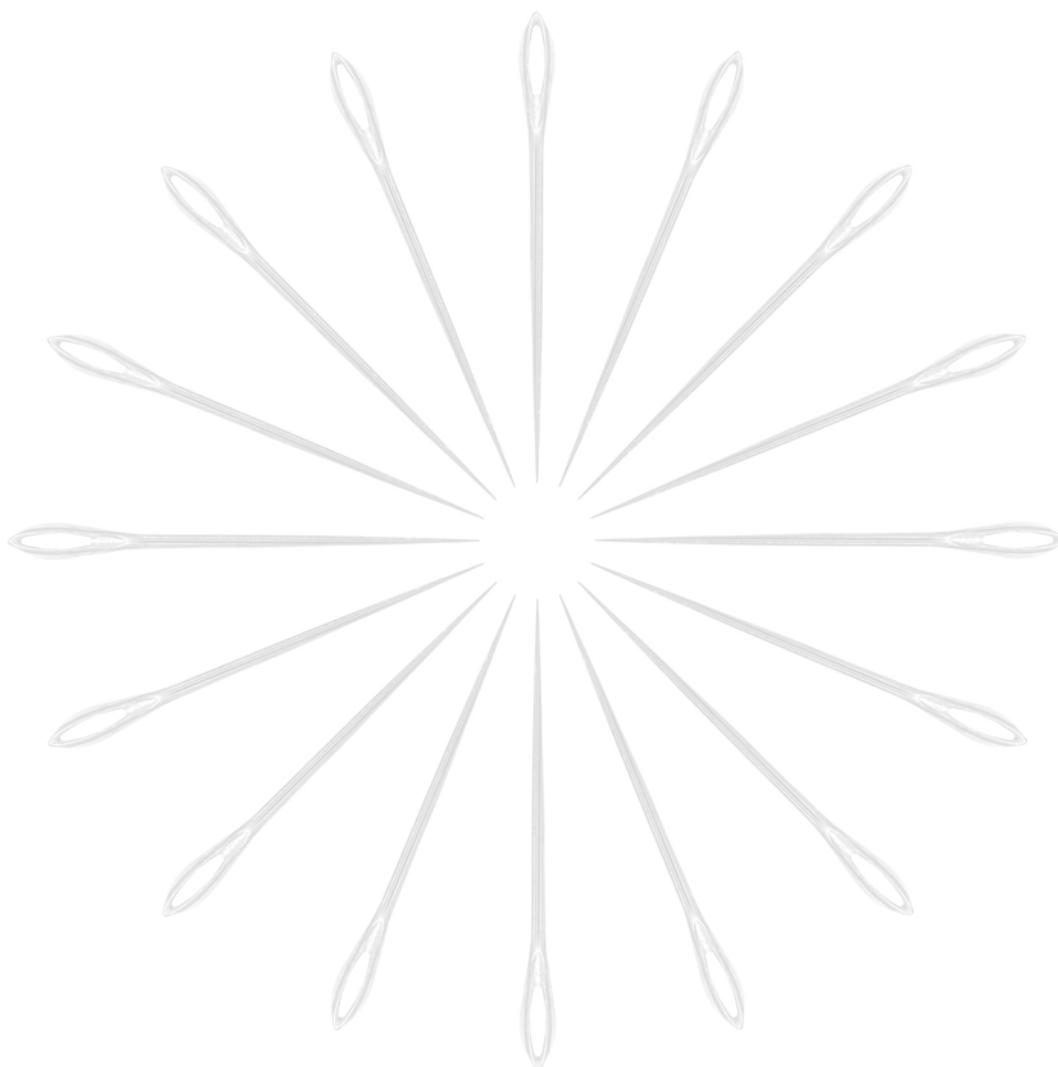
Fellows

Dr. Barbara Banks, Director/Curator, Lentz Center for Asian Culture
Dr. Peter Bleed, Professor, Anthropology
Dr. Barbara Caron, Assistant Director, IQSceum
Ms. Mary Cassner, Associate Professor & Subject Specialist Librarian
Dr. Patricia Crews, Director, IQSC and Professor, Textiles, Clothing & Design
Ms. Carolyn Ducey, Curator of Collections, IQSC
Ms. Mary Ellen Ducey, Associate Professor & Special Collections/Archives Librarian
Ms. Marin Hanson, Curator of Exhibitions, IQSC
Mr. Michael James, Chairperson and Ardis James Professor, Textiles, Clothing & Design
Ms. Karen Janovy, Curator of Education, Sheldon Memorial Art Gallery
Dr. Wendy Katz, Associate Professor, Art and Art History
Dr. Margaret Latta, Associate Professor, Teaching, Learning & Teacher Education
Dr. Shirley Niemeyer, Extension Specialist, Textiles, Clothing & Design
Dr. Marshall Olds, Professor, Modern Languages & Literature
Dr. Joy Ritchie, Chairperson and Professor, English
Dr. Kari Ronning, Research Associate Professor, English
Dr. Alison Stewart, Professor, Art and Art History
Dr. Barbara Trout, Professor, Textiles, Clothing & Design
Dr. Diane Vigna, Extension Specialist, Textiles, Clothing & Design
Ms. Wendy Weiss, Professor, Textiles, Clothing & Design
Dr. Kenneth Winkle, Professor, History
Dr. Susan Wunder, Associate Professor, Teaching, Learning, and Teacher Education

Associate Fellows

Dr. Linda Arthur, Professor, Washington State University
Dr. Jacqueline Atkins, Curator of Textiles, Allentown Art Museum, Allentown, PA
Ms. Lynne Z. Bassett, Independent curator and author, Ware, MA
Ms. Kathryn Berenson, Author, Paris, France
Dr. Janet Berlo, Professor of Art History, University of Rochester, Rochester, NY
Ms. Barbara Brackman, Independent Curator, author and scholar, Lawrence, KS
Dr. Glen Brown, Associate Professor of Art History, Kansas State University, Manhattan
Ms. Pauline Burbidge, Artist, Allanbank Mill Steading, Berwickshire, Scotland
Ms. Dorothy Caldwell, Artist, Hastings, Ontario, Canada
Dr. Denise Campbell, Associate Vice President for Student Affairs, Ethnic Studies Faculty Member, Cal Poly State University, San Luis Obispo, CA
Dr. Robert Cargo, Professor Emeritus, University of Alabama-Tuscaloosa
Ms. Ricky Clark, Affiliate Scholar, Oberlin College, OH
Ms. Xenia Cord, Independent Scholar, Kokomo, IN
Dr. Raymond Dobard, Professor of Art, Howard College, Washington, DC
Ms. Linda Eaton, Curator of Textiles, Winterthur Museum and Country Estate, Delaware
Dr. Judy Elsley, Professor of English, Weber State University, Weber, UT
Ms. Sandi Fox, Independent Curator, author and scholar, Los Angeles, CA
Dr. Annette Gero, Associate Professor, University of New South Wales, Sydney, Australia
Ms. Jennifer Goldsborough, Museum Curator and Adjunct Professor, Parson's School of Design and Sotheby's Institute, NY
Dr. Beverly Gordon, Professor, University of Wisconsin-Madison
Dr. Virginia Gunn, Professor, University of Akron, OH
Dr. Colleen Hall-Patton, Lecturer, University of Nevada-Las Vegas
Dr. Bernard Herman, George B. Tindall Professor of American Studies, University of North Carolina-Chapel Hill
Ms. Marilyn Henrion, Artist, New York, NY
Mr. Jonathan Holstein, Author, independent curator, Cazenovia, NY
Ms. Laurel Horton, Folklorist, independent curator, author, consultant, Seneca, SC
Ms. Mary Anne Jordan, Professor, Department of Design, University of Kansas, Lawrence
Ms. Stacy Kamehiro, Assistant Professor, University of California, Santa Cruz
Ms. Lisa Kriner, Associate Professor of Art, Berea College, Berea, KY
Ms. Bridget Long, Independent scholar and author, Hertfordshire, England
Dr. Marilyn Luecke, Associate Professor of Humanities, College of Mount Saint Joseph, Cincinnati, OH
Dr. Marsha MacDowell, Curator of Folk Arts, Michigan State University Museum and Professor of Art History, Michigan State University, East Lansing
Ms. Terrie Hancock Mangat, Artist, Valdez, New Mexico
Dr. Carolyn Mazloomi, Artist, author, West Chester, OH

Dr. Ronald Naugle, Professor Emeritus of History, Nebraska Wesleyan University, Lincoln
Ms. Aimee Newell, Curator of Collections, National Heritage Museum, Lexington, MA
Ms. Ellen Oppenheimer, Artist, Oakland, CA
Ms. Thereza Oleinick, Associate Professor, Theatre Department, Auburn University, AL
Dr. Margaret Ordonez, Associate Professor, University of Rhode Island, Kingston
Ms. Dorothy Osler, Independent scholar and author, Northumberland, England
Dr. Rachel Pannabecker, Director, Kauffman Museum, Bethel College, Newton, KS
Dr. Jane Przybysz, Executive Director, San Jose Museum of Quilts and Textiles, CA
Dr. Clare Rose, Independent Scholar, Visiting Lecturer in History of Design, Chelsea College of Art, London, England
Ms. Joy Saville, Artist, Princeton, NJ
Ms. Judy Schwender, Curator of Collections/Registrar, National Quilt Museum, Paducah, KY
Ms. Lynn Settrington, Artist and Senior Lecturer, Manchester Metropolitan University, Manchester, England
Mr. Robert Shaw, Independent scholar, author, Shelburne, VT
Dr. Sandra Sider, Artist, curator, adjunct instructor Fashion Institute of Technology, Bronx, NY
Ms. Janneken Smucker, Author and doctoral candidate, University of Delaware, Newark
Dr. Marybeth Stalp, Associate Professor of Sociology, University of Northern Iowa, Cedar Falls
Dr. Tricia Stoddard, Independent scholar, author, Provo, UT
Dr. Susan Tortore, Assistant Professor, University of Idaho, Moscow
Dr. Maude Wahlman, Professor, Dept. of Art and Art History, University of Missouri - Kansas City
Ms. Merikay Waldvogel, Independent curator, author, lecturer, Knoxville, TN
Ms. Janice Wass, Curator, Illinois State Museum
Dr. Linda Welters, Professor of Textile and Costume History, University of Rhode Island, Kingston
Ms. Jenny Yearous, Curator of Collections, North Dakota State Historical Society, Bismarck
Ms. Shelly Zegart, Author, collector, founding director of the Alliance for American Quilts, Louisville, KY



International Quilt Study Center & Museum

1523 N. 33
Lincoln, NE 60502
www.quiltstudy.org
402-472-6549



Staff

Patricia Crews, Director
Barbara Caron, Assistant Director
Carolyn Ducey, Curator of Collections
Joy Shalla Glenn, Office Assistant
Marin Hanson, Curator of Exhibitions
Angela Konin, Education Coordinator
Maureen Ose, Communications Coordinator
Mary Ourecky, Visitor Services Coordinator
Janet Price, Collections Manager
Rosanne Samuelson, Administrative Support Associate